



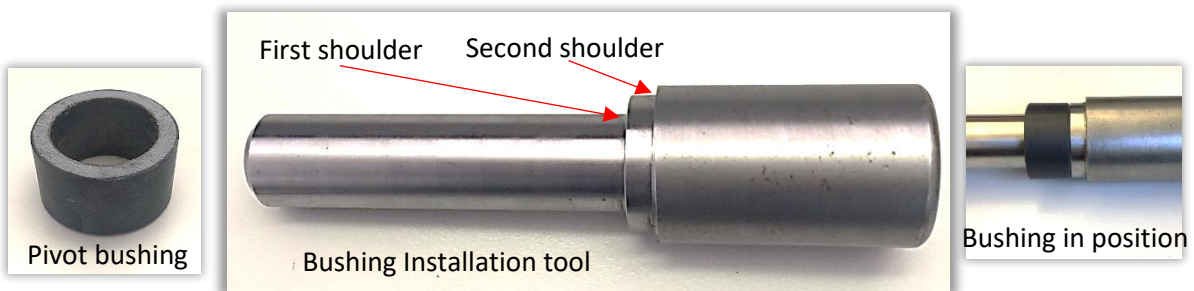
North American Distributor
Exapta Solutions Inc
☎ 785-820-8000
Email: sales@exapta.com

Australian Distributor
Aricks Australia
☎ 02 6033 0744
Email:
info@bprengineering.com

(PRESS)
INSTALLATION INSTRUCTIONS OF NON-GREASABLE BUSHINGS FOR FIRING AND CLOSING PIVOTS

Preparation: *ensure all internal surfaces are cleaned and free from residual material*

If using the installation tool (available separately), place one bushing onto the shaft until it is resting on the first shoulder as indicated below



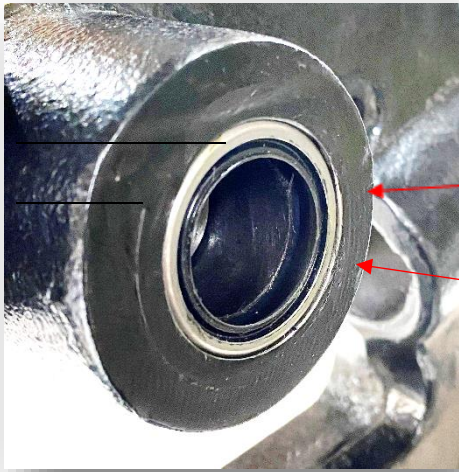
Bushing Installation

Insert the tool into one side of the pivot and drive the first bushing halfway into the pivot. Repeat the same process on the other side of the pivot and drive this second bushing **all the way into place**. The second shoulder of the tool will be hard against the opener arm when in the correct position. Return to the first side and drive the first bushing into place as well.

Seal Installation

Mount one seal onto the shaft of the bushing installation tool as per pictured below.





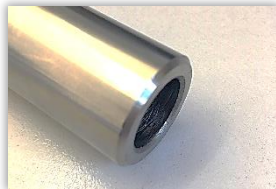
Drive seal home till flush with the outer cast surface.
Seal in the fully inserted position.



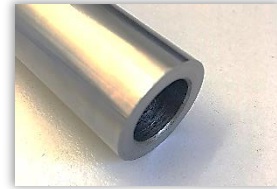
Sleeve Installation

The sleeve has a flat and a chamfered end as shown in the below pictures. *(This only applies to the firming wheel sleeve)*

Chamfered end

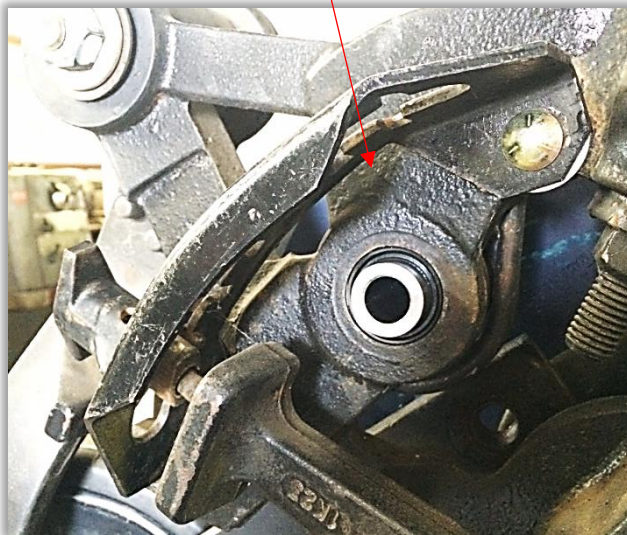


Flat end

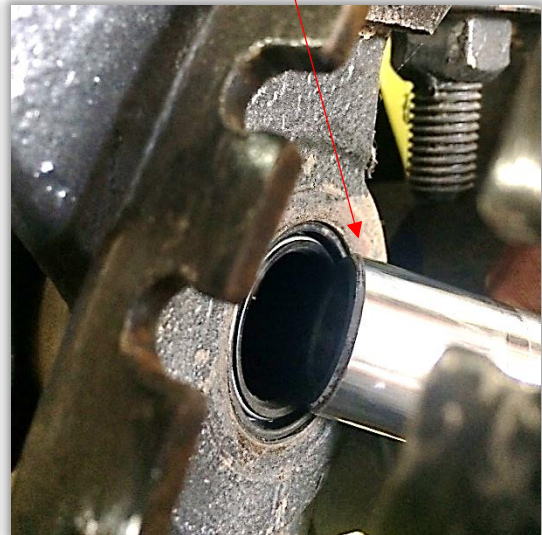


The chamfered end is inserted **first** into the cover plate side of the pivot as shown in the below picture.

Cover plate side



Chamfered end inserted first



Australian Distributor

Aricks Australia ☎ 02 6033 0744 Email: info@bprengineering.com.au

North American Distributor

Exapta Solutions Inc ☎ 785-820-8000 Email: sales@exapta.com